

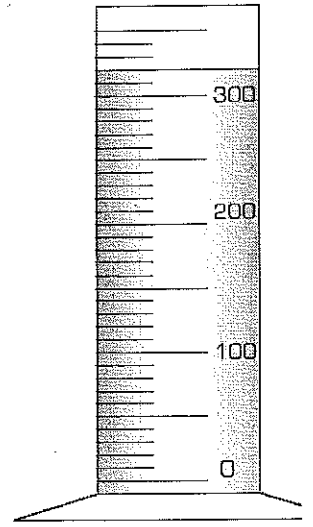
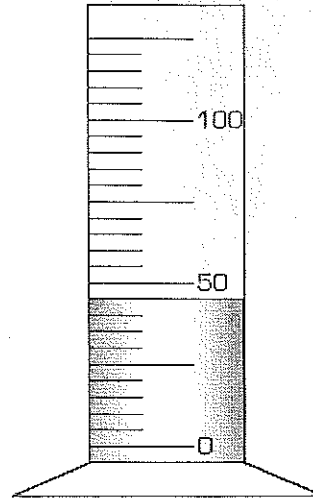
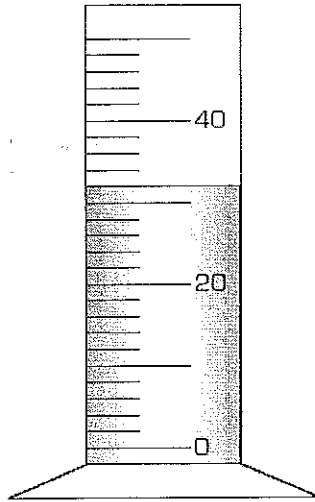
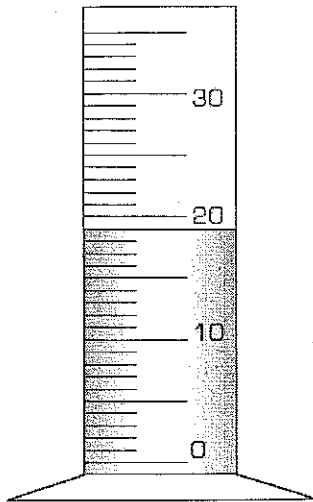


PRE MISSION TRAINING: READING SCALES



Name _____ Date _____

Directions: Read the following graduated cylinders to the nearest tenth of a milliliter (0.1 mL).

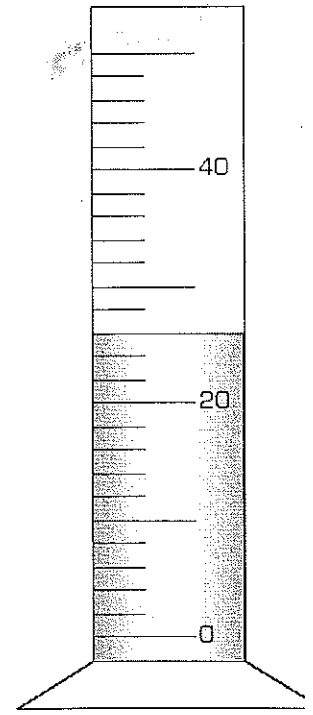
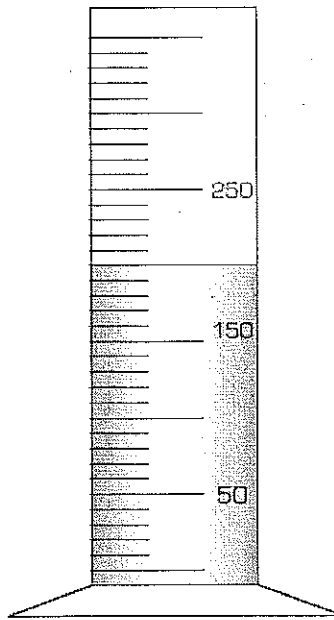
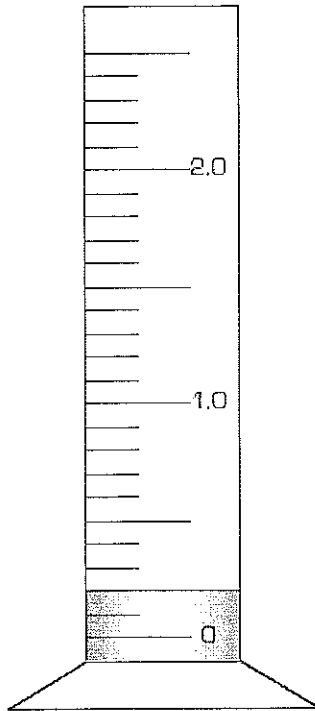
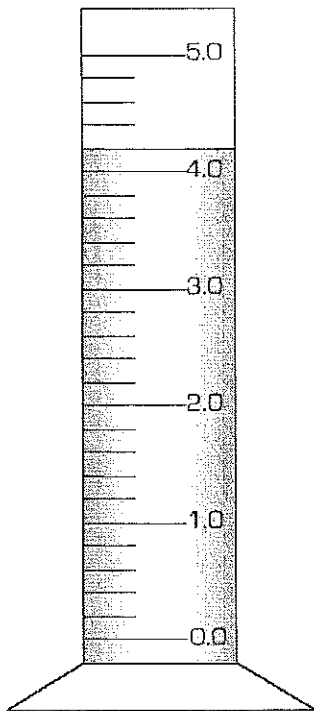


1. _____ mL

2. _____ mL

3. _____ mL

4. _____ mL



5. _____ mL

6. _____ mL

7. _____ mL

8. _____ mL

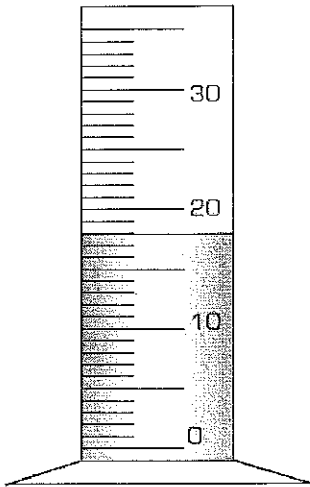


PRE MISSION TRAINING: READING SCALES

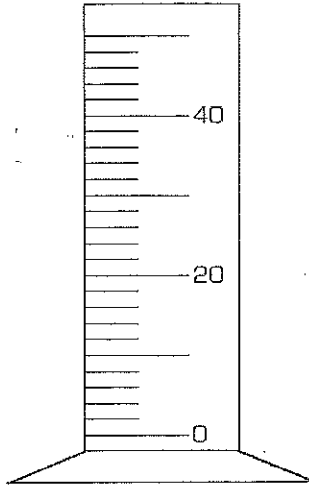


Name _____ Date _____

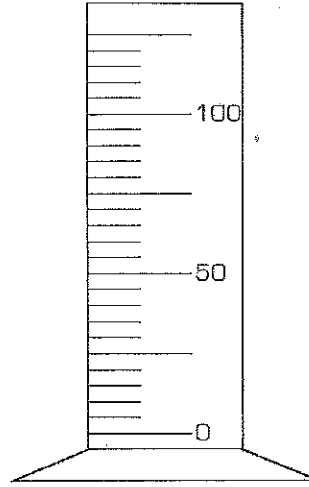
Directions: Draw the liquid level to the appropriate measurement and shade the liquid. The first one is done for you.



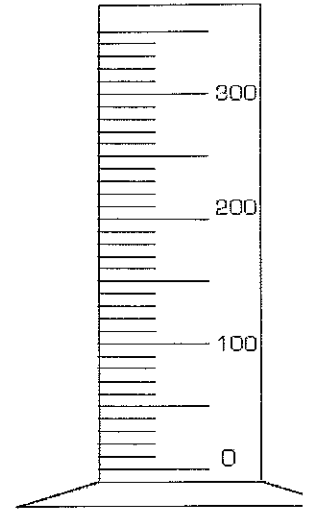
1. 18 mL



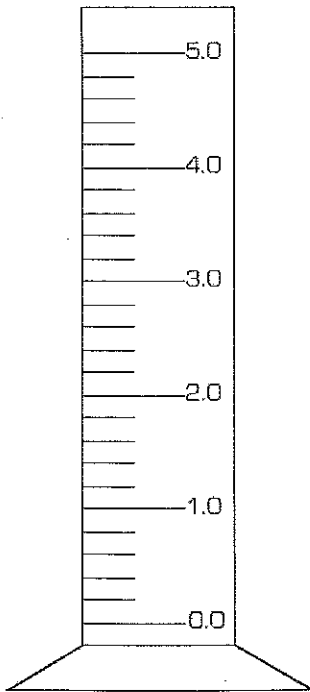
2. 44 mL



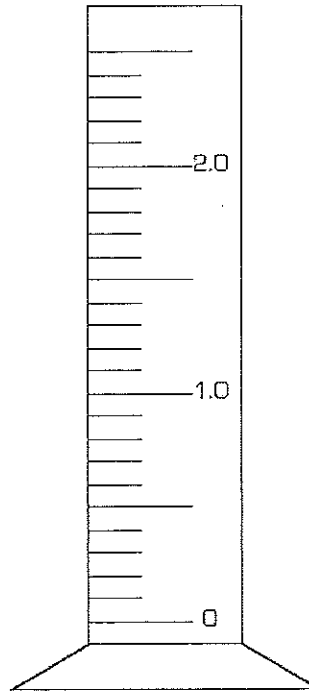
3. 65 mL



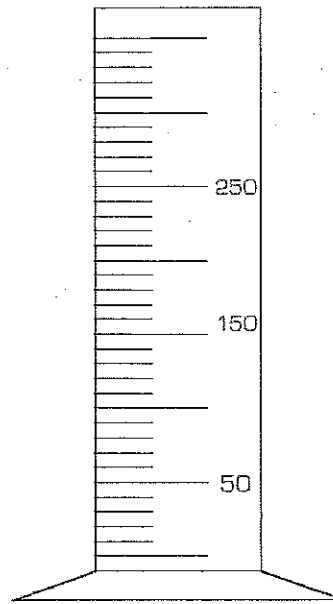
4. 220 mL



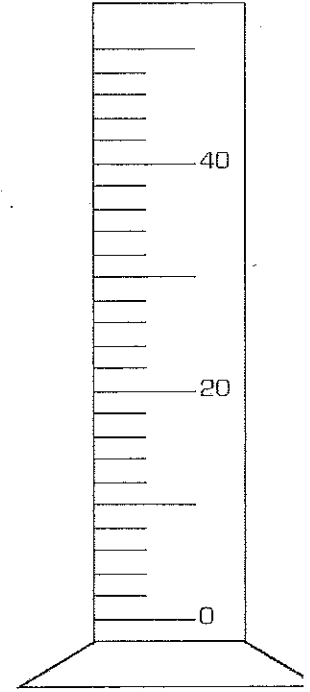
5. 4.4 mL



6. 1.8 mL



7. 270 mL



8. 4 mL